

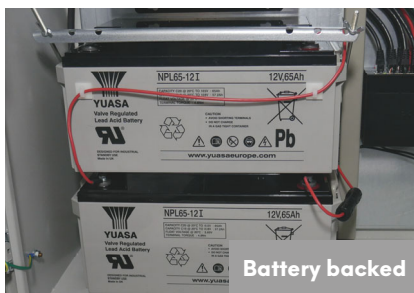


## MAIN HUB - WALL MOUNT

The central point for any FCam CORE system, the Main Hub wall-mount version is functionally identical to the CT-MHBB-106 but in an IP65 wall-mounted enclosure instead of a rack unit. It is a fully assembled and pre-configured unit which provides control and interface functions for the FCam system.

The Main Hub supports up to 6 FCam cameras directly, and up to 128 with the use of Extension Hubs.

### Features



Battery backed

Meets the requirements of BS5839-1 for L1-5 and P1-2 category systems (with remote fault monitoring).

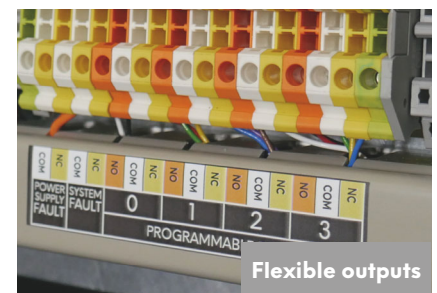
During a mains failure the Main Hub will continue to power up to six attached FCam CORE cameras plus the internal control gear and network infrastructure for 24 hours in standby plus 30 minutes in alarm.



Simple cabling

Designed specifically for use with fire-rated "FP" data cable, all cable termination is via punchdown block or screw terminal, all of which are clearly labelled and easily accessible.

Cable entry to the cabinet is via 20mm glands, which are supplied ready-fitted so no drilling is required.



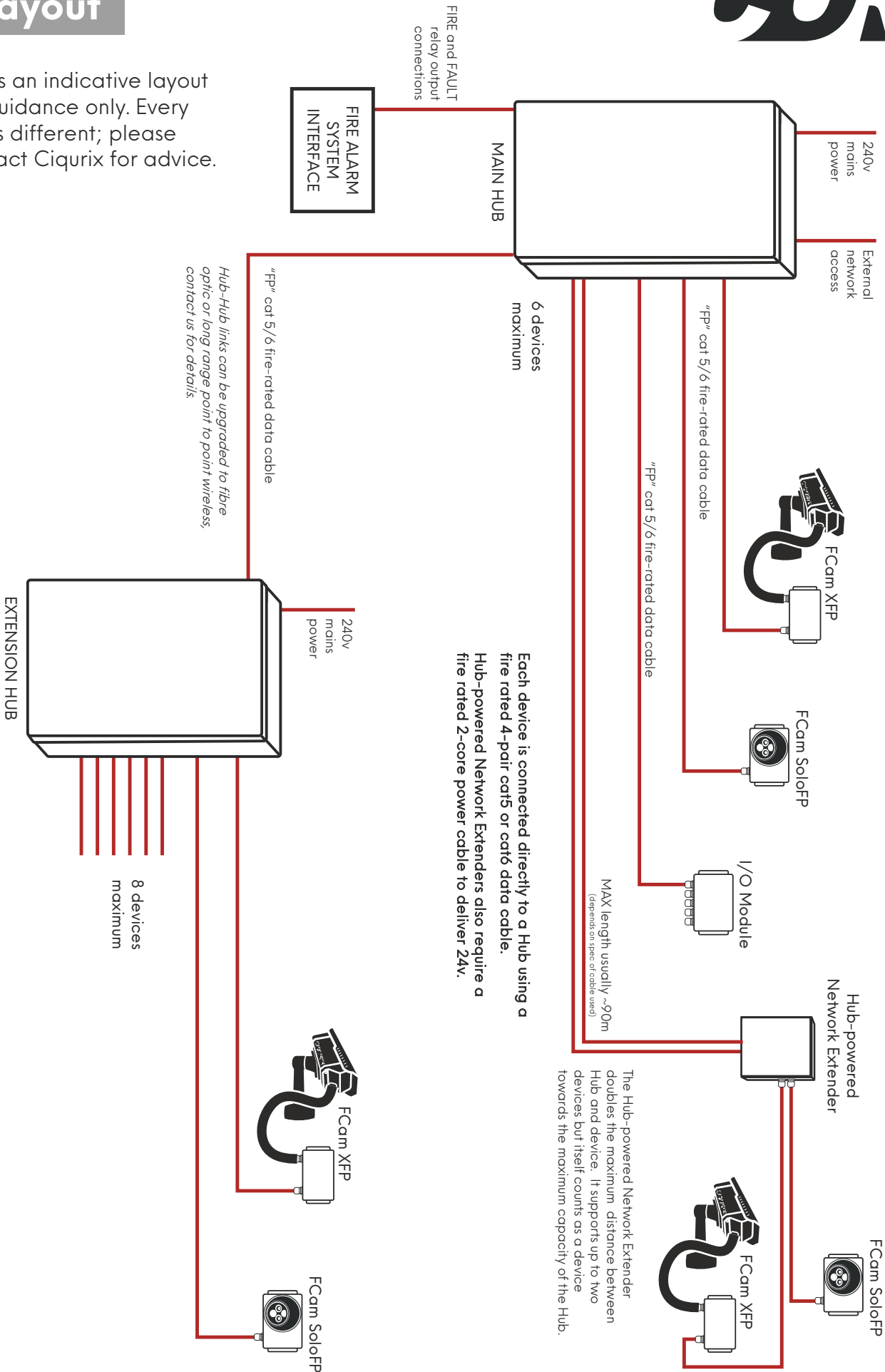
Flexible outputs

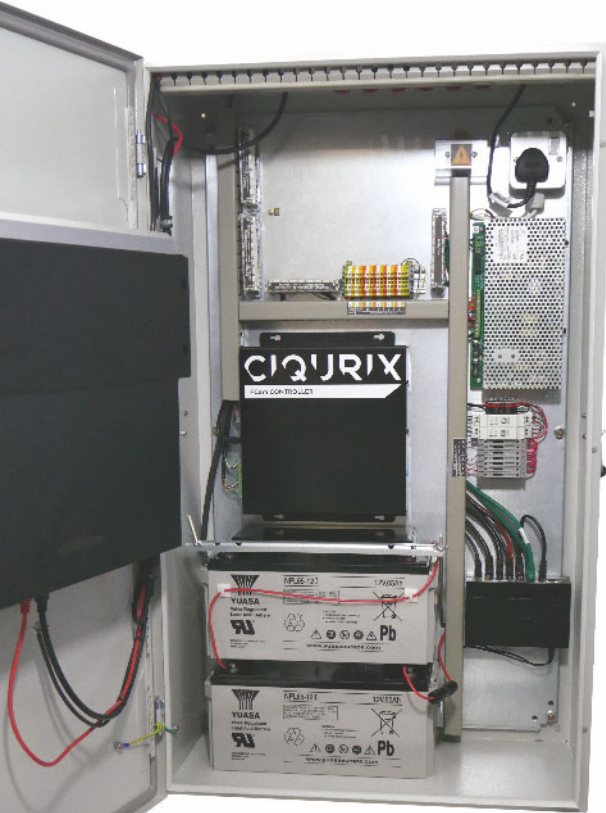
Four programmable alarm relays plus two fault relays provide universally compatible signalling to other systems, eg. fire alarm, fire suppression, remote communicator.

Network I/O Modules (CT-MDFP-124) can be connected to a camera port if additional outputs are required.

# Layout

This is an indicative layout for guidance only. Every site is different; please contact Ciqurix for advice.





## Specification

	CT-MHBB-106	CT-MHNB-106
<b>Voltage:</b>	220-240Vac 50Hz	220-240Vac 50Hz
<b>Current:</b>	4A (inrush max 30A <30ms)	4A (inrush max 30A <30ms)
<b>Power Input:</b>	Screw terminal	Screw terminal
<b>Batteries:</b>	Yuasa NPL65-12I 65Ah 12V VRLA x 2 (included)	Not supplied (2 x Yuasa NP-65I required)
<b>Temperature:</b>	+5 to +40 °C	+5 to +40 °C
<b>Humidity:</b>	< 90%	< 90%
<b>Weight:</b>	130kg (incl batteries)	80kg (excl batteries)
<b>Dimensions:</b>	600mm (w), 300mm (d), 1000mm (h)	
	Space provided for optional NVR (video recorder) - 2U / max depth 420mm	
<b>Connections:</b>	1 x system global fault output, 1 x hub power fault output (both normally-closed relays)	
	4 x programmable alarm outputs (changeover relays)	
	6 x cannet ports for FCam CORE cameras or CORE I/O Modules (Krone IDC punchdown)	
	1 x hubnet port for Extension Hub connection (Krone IDC punchdown)	
	1 x WAN port for external network access (Krone IDC punchdown)	
<b>Optional:</b>	Additional ports for I/O Modules only (max 2), fibre optic upgrade to hubnet port and/or WAN port, aux power terminals for Network Extender/s, modified hubnet port suitable for wireless hub link. <i>All options incur a fixed customisation fee plus the cost of any additional equipment required.</i>	



E&OE. Ciqurix operates a program of continuous product development. Specifications may be subject to change without notice. Please check with Ciqurix for the latest information.